



# Chile

## Formal Presentation R-PP

March 2013, Washington D.C. United States



**CONAF**  
Ministerio de  
Agricultura

Gobierno de Chile



# Chile

## Formal Presentation R-PP

March 2013, Washington D.C. United States



**CONAF**  
Ministerio de  
Agricultura

Gobierno de Chile

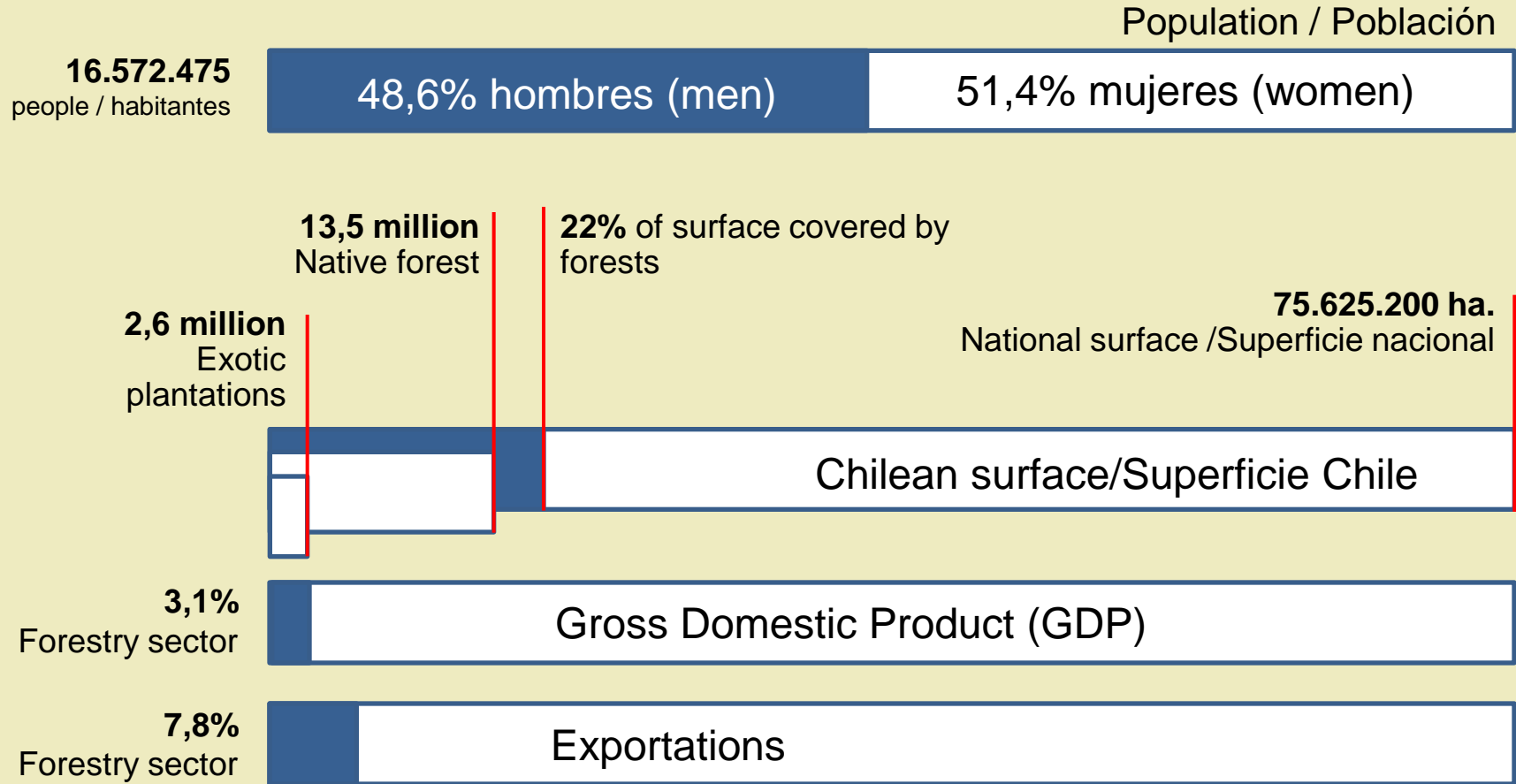
# Contents



1. Chile and its forests
2. Institutional arrangements on climate change
3. Institutional arrangements on REDD+
4. Dissemination plan
5. REDD + strategy
6. Reference levels
7. Monitoring systems
8. Budget



# 1. Chile and its forests



# 1. Chile and its forest

Forests surface by type and comparison from 1997 to 2011

## Forests type

1997

2011

**Native forests**

**13.430.602**

**13.599.610**

Adult Forest

5.977.839

5.912.235

Young Forest

3.585.746

3.808.769

Mix Forest

861.925

892.822

Shrubs Forest

3.005.092

2.985.784

**Forest Plantations**

**2.119.005**

**2.620.486**

**Forest Plantations and native**

**87.626**

**123.756**

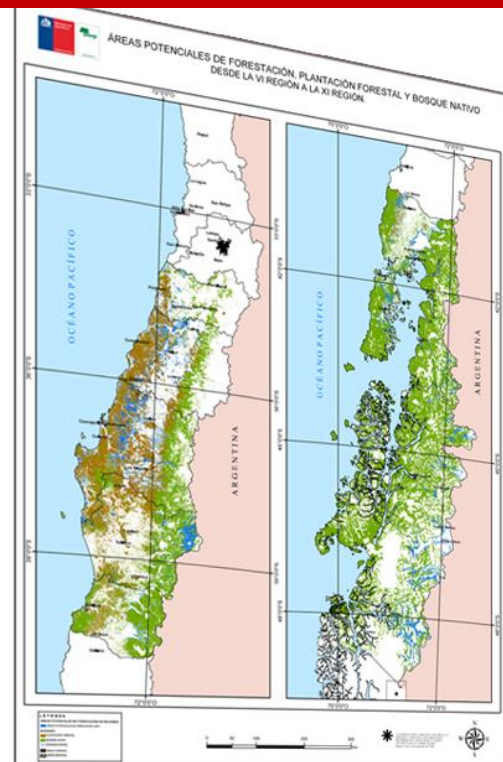
Protection

81.502

**Total**

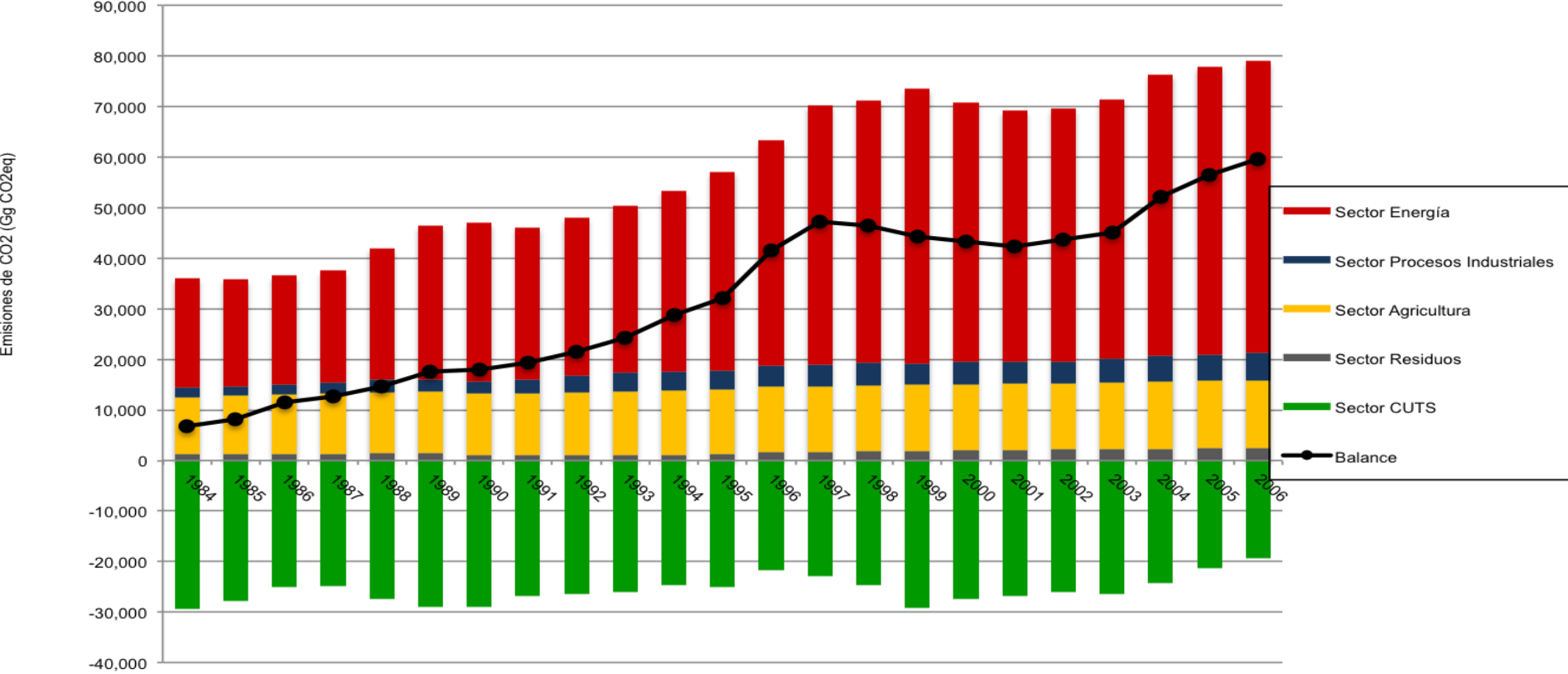
**15.637.233**

**16.343.852**



Source: Land Cover Register of Chilean Forest Resources (2011).

# 1. Chile and its forests



National Inventory of Greenhouse Gas (GHG) Sources and Sinks (Second National Communication 2011)



## 2. Institutional arrangements on climate change

### National Advisory Committee on Global Change

Chairman



Ministry of Environment

Vice Chairman

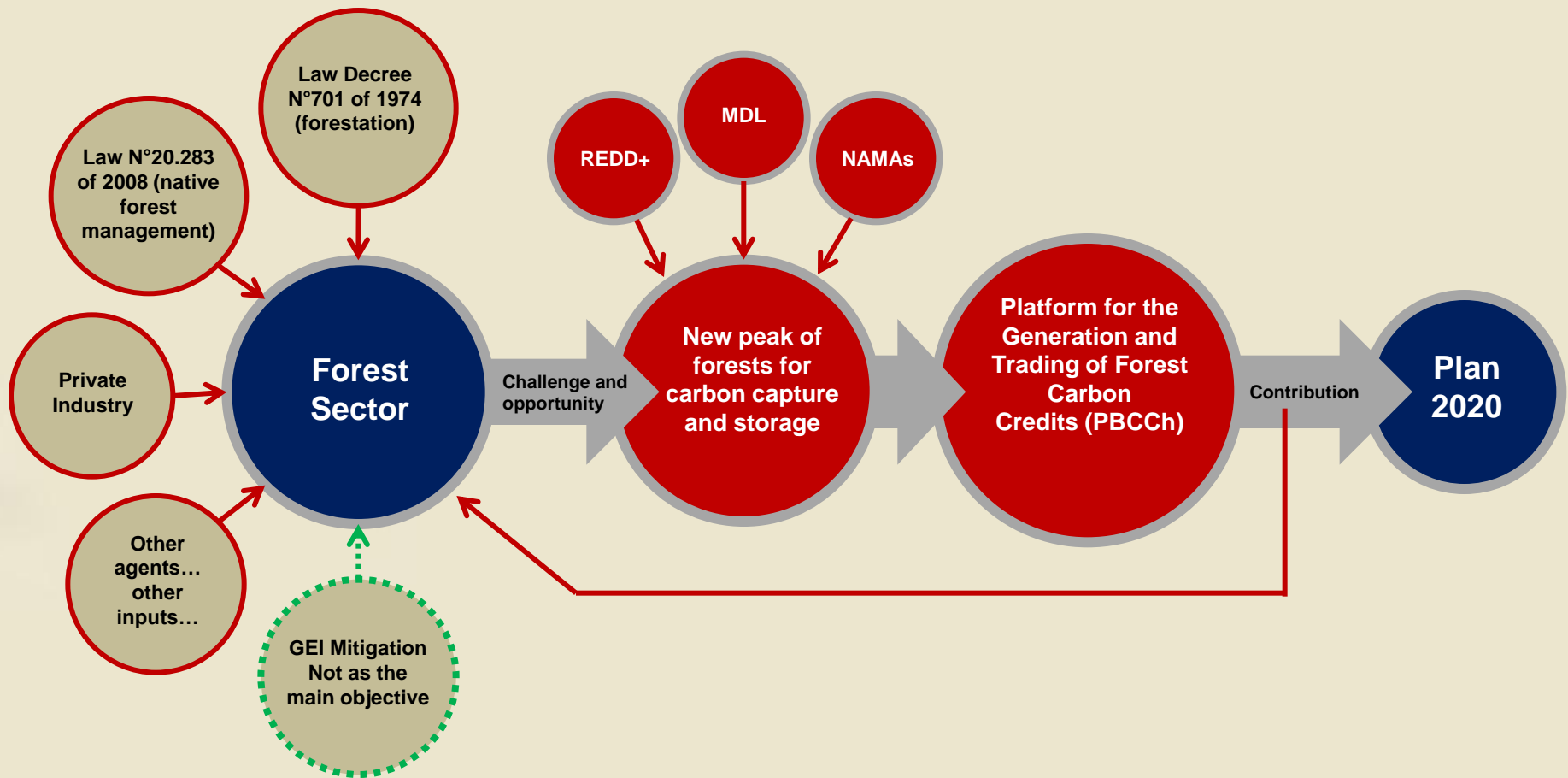


Director of Special Policy of the Ministry of Foreign Affairs

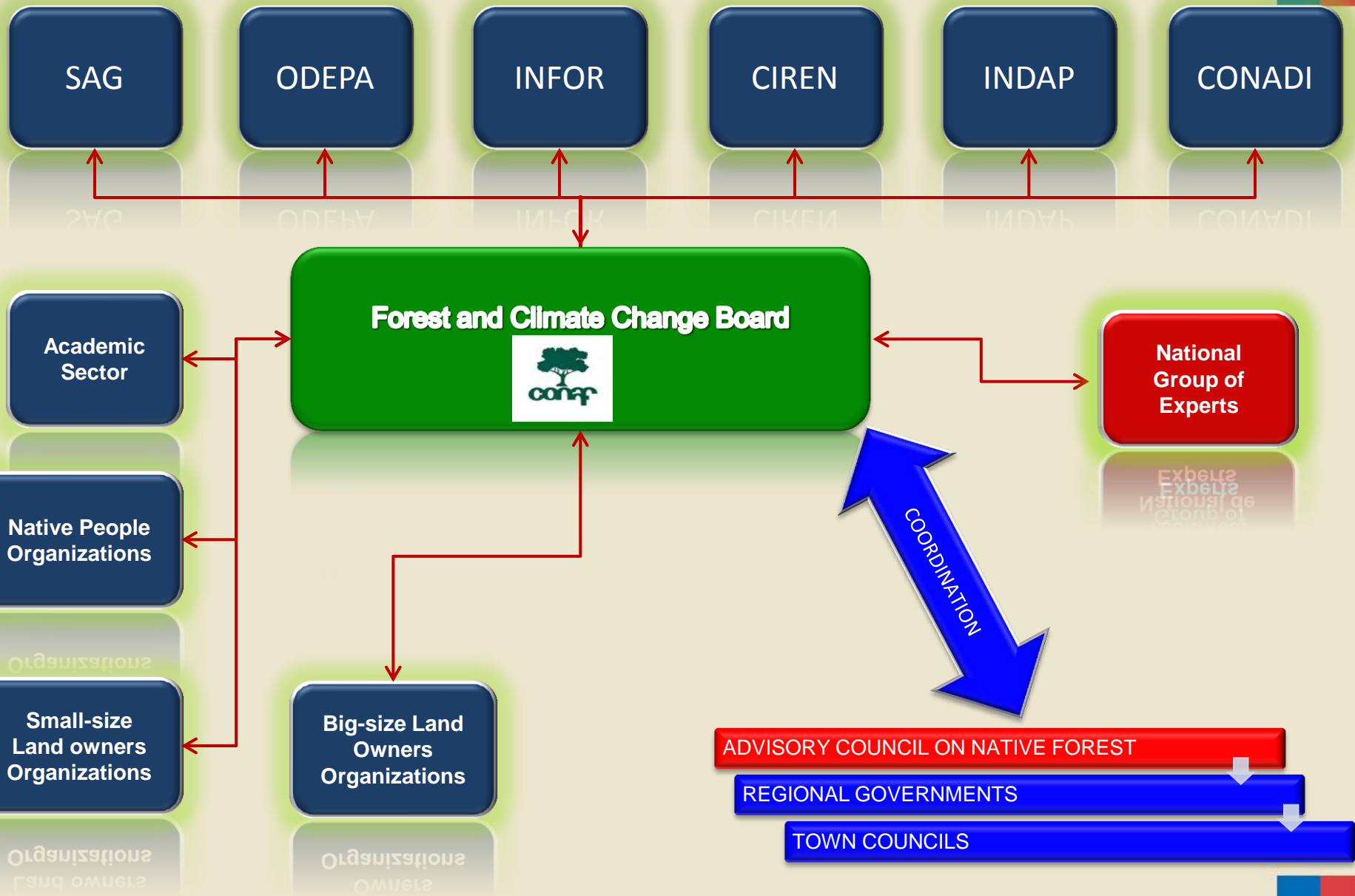
A representative of

- Ministry of Agriculture
- Naval Hydrographic and Oceanographic Service
- National Committee on Energy
- National Office of Maritime Territory and Merchant Navy
- Chilean Meteorology Service
- National Committee on Scientific and Technological Research
- Chilean Academy of Sciences

## 2. Institutional arrangements on climate change

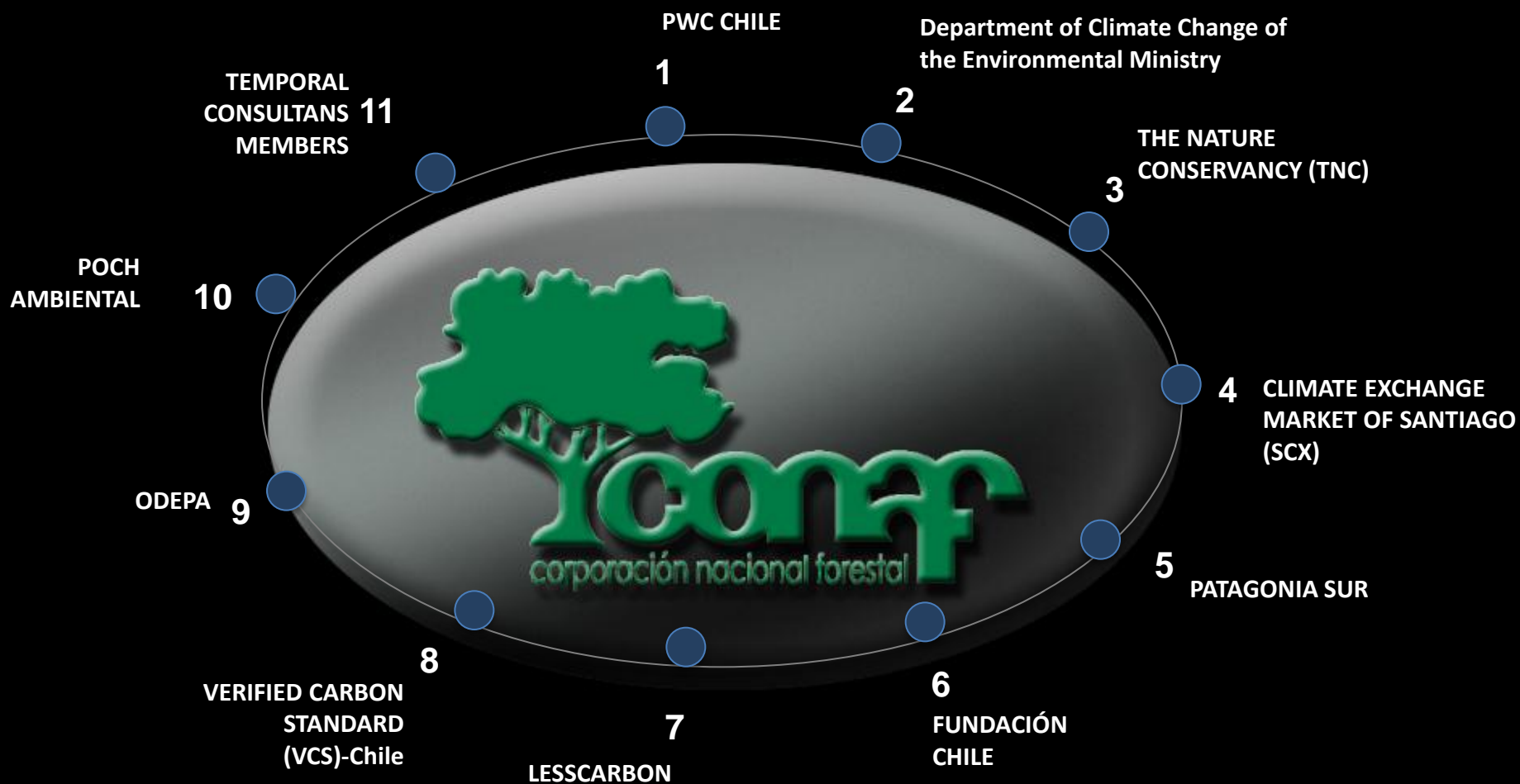


### 3. Institutional arrangements on REDD+



### 3. Institutional arrangements on REDD+

#### National Group of Experts (GTNE)



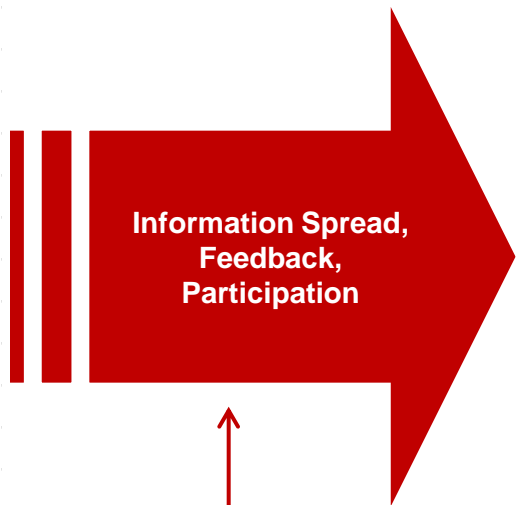
# 4. Dissemination plan



## Forests and Climate Change Group of CONAF

## Target Group

| REGION | NAME                |
|--------|---------------------|
| XV     | Guillermo Cisternas |
| I      | Sergio Barraza      |
| II     | Nancy Cortés        |
| III    | Felix Avaria        |
| IV     | Rafael Medina       |
| V      | Juan Carlos Ramos   |
| VI     | Hugo Barrauto       |
| VII    | Norma Retamal       |
| VIII   | Alejandro Canales   |
| IX     | Héctor Muñoz        |
| XIV    | Ernesto Weil        |
| X      | Jaime Garrido       |
| XI     | Marco Narváez       |
| XII    | Pamela Duhalde      |
| RM     | Carlos Ravanal      |



- Forests Owners
- Rural Communities (others than native people)
- Indigenous Peoples
- Territorial Organizations
- Academic Sector
- Organizations related to Climate Change
- NGOs
- Private Sector
- Governmental Institutions
- Others

**Workshops, meetings, training, brochures, newspapers and Web advertisement, field trips, others**

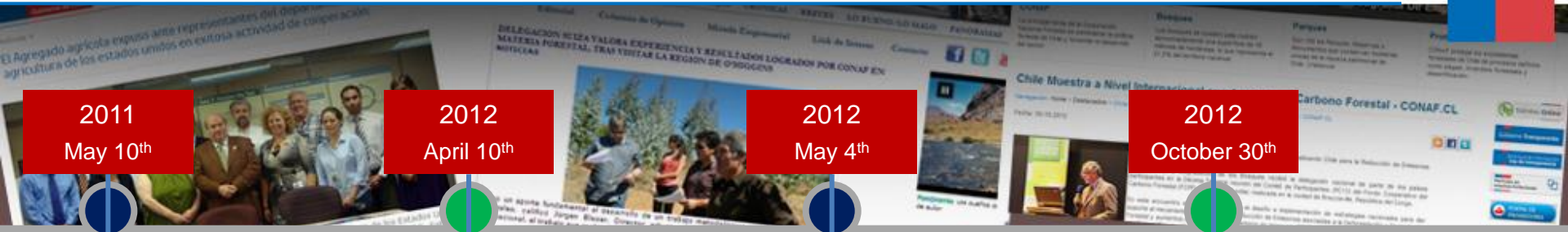


## 4. Dissemination plan

### At this moment

| Regions            | Planned meetings to provide information on strategies of forest management, climate change, PBCCh and REDD+, according to each target group |  |                |   |           |            | Meetings                        |
|--------------------|---|--|----------------|---|-----------|------------|---------------------------------|
|                    | Rural Organizations of indigenous communities   | Rural Organizations (others than indigenous communities) | Private Sector | Public Sector Institutions and Universities | NGOs      | Total      | Number of meetings Nov-Dec 2012 |
| Arica y Parinacota | 11  | 0  | 1              | 1   | 0         | <b>13</b>  | 2                               |
| Tarapacá           | 10  | 2  | 0              | 10  | 0         | <b>22</b>  | 2                               |
| Antofagasta        | 7   | 3  | 5              | 10  | 0         | <b>25</b>  | Report in progress              |
| Atacama            | 4   | 3  | 1              | 2   | 0         | <b>10</b>  | Report In progress              |
| Coquimbo           | 0   | 14   | 0              | 2   | 0         | <b>16</b>  | 3                               |
| Metropolitana      | 0   | 2  | 2              | 6   | 5         | <b>15</b>  | 9                               |
| Valparaíso         | 0   | 18   | 3              | 10  | 1         | <b>32</b>  | Report in progress              |
| O'Higgins          | 0   | 0  | 2              | 1   | 0         | <b>3</b>   | Report in progress              |
| Maule              | 0   | 0  | 5              | 2   | 0         | <b>7</b>   | 2                               |
| Bíobío             | 17  | 11   | 0              | 0   | 0         | <b>28</b>  | Report in progress              |
| La Araucanía       | 20  | 13   | 0              | 1   | 2         | <b>36</b>  | 14                              |
| Los Ríos           | 4   | 7  | 1              | 5   | 1         | <b>18</b>  | Report in progress              |
| Los Lagos          | 2   | 4  | 1              | 1   | 0         | <b>8</b>   | 5                               |
| Aysén              | 0   | 1  | 0              | 2   | 0         | <b>3</b>   | Report in progress              |
| Magallanes         | 1   | 4  | 7              | 13  | 1         | <b>26</b>  | Report in progress              |
| <b>Total</b>       | <b>76</b>   | <b>82</b>  | <b>28</b>      | <b>66</b>                                   | <b>10</b> | <b>262</b> | <b>37</b>                       |

# 4. Dissemination plan



2011  
May 10<sup>th</sup>

2012  
April 10<sup>th</sup>

2012  
May 4<sup>th</sup>

2012  
October 30<sup>th</sup>

Chilean delegation visits the USFS strengthening of the MRV system

Visit to USDA Washington D.C.

<http://www.chileagricola.us/Estatica/Actividades.html>

Swiss delegation visits Chile planning of NAMA

[http://www.elurbanorural.cl/index.php?subaction=show\\_full&id=1334094614&archive=&start\\_from=&ucat=10](http://www.elurbanorural.cl/index.php?subaction=show_full&id=1334094614&archive=&start_from=&ucat=10)

International Conference on Climate Change organized by CONAF

[http://issuu.com/technopresss.a./docs/lignum\\_135?mode=window&background-color=%23222222](http://issuu.com/technopresss.a./docs/lignum_135?mode=window&background-color=%23222222)

Presentation R-PP in Congo

[http://www.conaf.cl/destacado-chile\\_muestra\\_a\\_nivel\\_internacional\\_sus\\_avances\\_en\\_carbono\\_forestal-1735.html](http://www.conaf.cl/destacado-chile_muestra_a_nivel_internacional_sus_avances_en_carbono_forestal-1735.html)

## 4. Dissemination plan

2012

September 24<sup>th</sup>

Workshop at CONAF analysis of capacities

<http://www.iciforestal.com.uy/la-region/615--cmcp-to-increase-brazilian-bek-capacity>

2012

November 5<sup>th</sup>

Workshop for small size forest owners and experts from the Agriculture Ministry at Aysen – 11th Region

<http://www.rln.cl/noticias/3757-se-realizo-taller-sobre-el-mercado-y-los-bonos-de-carbono-a-productoras-forestales>

<http://www.vientopatagon.cl/2012/11/se-realizo-taller-sobre-el-mercado-y.html>

2012

November 7<sup>th</sup>

Presentation of Forest NAMA in Panama

<http://www.conaf.cl/destacado-chile-sirve-de-ejemplo-a-paises-de-latinoamerica-y-el-caribe-1745.html>

2012

November 16<sup>th</sup>

Lectures for children at schools in Santiago

[http://www.conaf.cl/destacado-conaf-dijo\\_presente\\_en\\_encuentro\\_con\\_estudiantes\\_por\\_cambio\\_climatico-1764.html](http://www.conaf.cl/destacado-conaf-dijo_presente_en_encuentro_con_estudiantes_por_cambio_climatico-1764.html)

## 4. Dissemination plan

2012

November 20<sup>th</sup>

Official registration of Forest NAMA at the Secretariat of CMNUCC

[http://unfccc.int/cooperation\\_support/nama/items/6982.php](http://unfccc.int/cooperation_support/nama/items/6982.php)

2012

November 26<sup>th</sup>

Presentation of the Strategy of Forests and Climate Change in Chile to countries of Central America and El Salvador

[http://www.conaf.cl/destacado-chile\\_comparte\\_estrategia\\_de\\_bosques\\_y\\_cambio\\_climatico\\_con\\_paises\\_de\\_centroamerica-1769.html](http://www.conaf.cl/destacado-chile_comparte_estrategia_de_bosques_y_cambio_climatico_con_paises_de_centroamerica-1769.html)

<http://www.lignum.cl/noticias/?id=25925>

2013

January 4<sup>th</sup>

CONAF works with Universities to generate allometric functions

<http://www.ladiscusion.cl/index.php/noticias/noticias964883477/nuble1136751237/21268-estudian-capacidad-de-captura-de-carbono-en-especies-locales>

<http://www.lignum.cl/noticias/?id=26225>

[http://www.conaf.cl/destacado-conaf\\_fia\\_y\\_la\\_universidad\\_mayor\\_forman\\_alianza\\_para\\_el\\_desarrollo\\_de\\_estudios\\_sobre\\_captura\\_de\\_carbono\\_de\\_bosques\\_mediterraneos\\_de\\_chile-1821.html](http://www.conaf.cl/destacado-conaf_fia_y_la_universidad_mayor_forman_alianza_para_el_desarrollo_de_estudios_sobre_captura_de_carbono_de_bosques_mediterraneos_de_chile-1821.html)

<http://www.fia.cl/ListadoNoticias/Noticias/tabid/139/ArticleID/546/Estudio-determinar%20la-captura-de-carbono-de-los-bosques-mediterraneos-de-Chile.aspx>

## 4. Dissemination plan

2013

January 15<sup>th</sup>

Signing of Cooperation Agreement between CONAF and VCS international

<http://www.pointcarbon.com/news/1.2108043>

<http://www.tecnologiambiental.es/index.php/actualidad/2983-conaf-y-vcs-anuncian-un-convenio-jnr-con-un-gobierno-nacional-por-primera-vez-en-el-mundo.html>

[http://www.conaf.cl/destacado-chile\\_avanza\\_para\\_contar\\_con\\_bonos\\_de\\_carbono\\_para\\_transar\\_a\\_nivel\\_mundial-1808.html](http://www.conaf.cl/destacado-chile_avanza_para_contar_con_bonos_de_carbono_para_transar_a_nivel_mundial-1808.html)

<http://www.litoralpress.cl/design3/lpi/pdf3/litoralpresspdf.aspx?id=24854566&idT=9901&org=CONAF&carp=conaf&ve=0>

<http://www.ecoticias.com/eco-america/74355/Chile-avanza-ingresar-mercado-bonos-carbono/>

2013

January 28<sup>th</sup>

Note on the strategy of forests and climate change in Chile in Ecosystemmarketplace

[http://www.ecosystemmarketplace.com/pages/dynamic/article.page.php?page\\_id=9571&section=news\\_articles&eod=1](http://www.ecosystemmarketplace.com/pages/dynamic/article.page.php?page_id=9571&section=news_articles&eod=1)

2013

January 29<sup>th</sup>

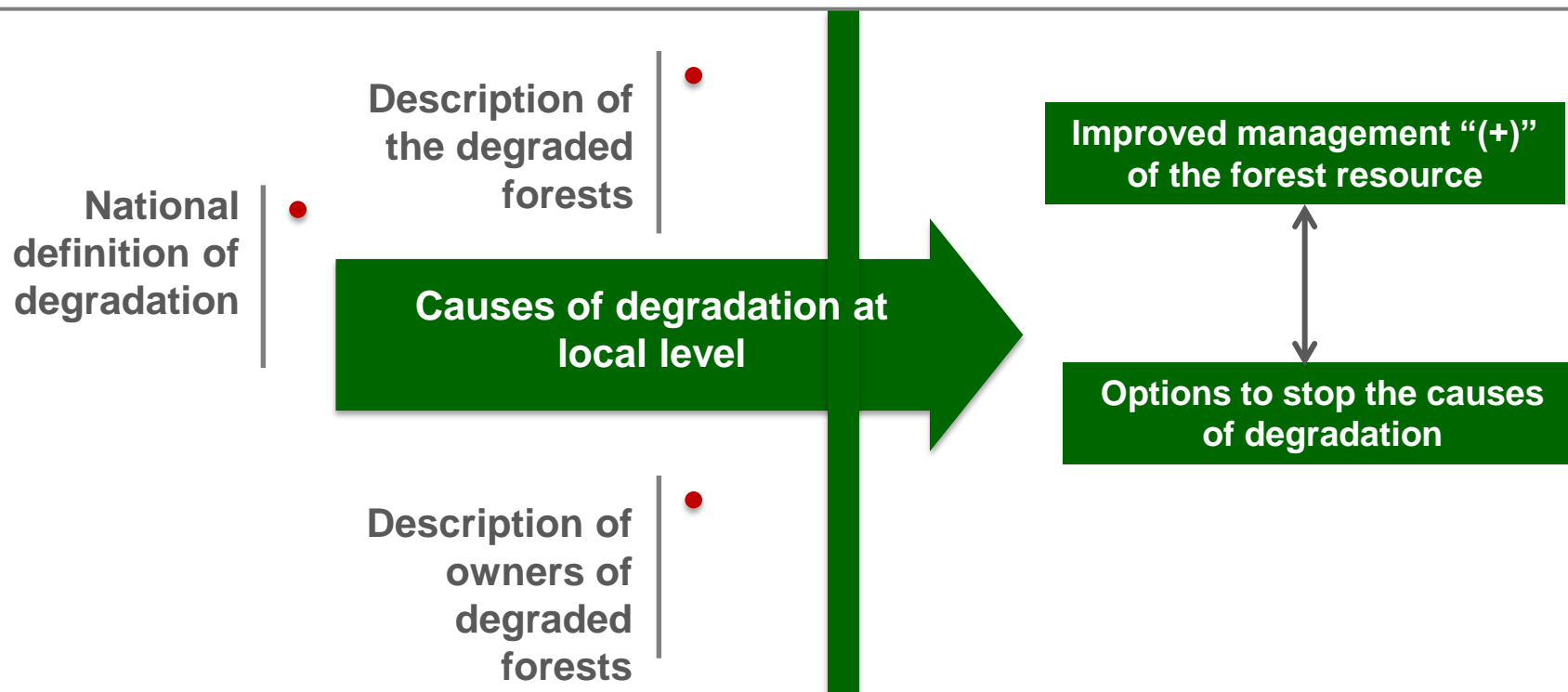
Workshop CONAF-VCS and Universities

[http://www.conaf.cl/destacado-conaf\\_avanza\\_en\\_el\\_desarrollo\\_de\\_tipologias\\_forestales\\_de\\_proyectos\\_de\\_captura\\_de\\_carbono-1859.html](http://www.conaf.cl/destacado-conaf_avanza_en_el_desarrollo_de_tipologias_forestales_de_proyectos_de_captura_de_carbono-1859.html)

## 5. REDD + strategy

### Macro diagnosis (positive view):

- 1 The deforestation process is not the main problem. The focus is forest degradation.
- 2 There is a legal system, regulations and procedures defined for the forest sector... evidently, requires regular improvements
3. There is a historic system of information and monitoring of the forest resource... however, it needs to be standardized and enhanced



## 5. REDD + strategy



**Forest plantation of Prosopis (I –II Region)**



**Forestation of Atriplex (IV Region)**



**Enhancement of Mediterranean Forest (IV a VI Region)**



**Exotic Forest Plantations (V-IX Region)**



**Enhancement of disturbed native forest (VIII-X Region)**



**Management of young trees forests RO-RA-CO / Canelo (VIII-X Region)**



**Alerce conservation (X Region)**



**Forestation at Patagonia region (XI-XII Region)**

### **QUESTIONS TO BE CONSIDERED IN DEFINING TYPOLOGIES FOR FOREST CARBON PROJECTS**

Which are the expected CO<sub>2</sub> levels of capture for each type of project?

How is the capture going to be estimated and monitored after the implementation of the project?

Which are the edafoclimatic and forest (in terms of type) conditions for the project?

Which are the possible forest activities or technical dispositions to carry out?

Are each one of the project types really additional?

How is the permanence of the stock of carbon going to be solved?

Which are the social and environmental impacts that (intentional or unintentional) each type of project can cause?

# 5. REDD + strategy



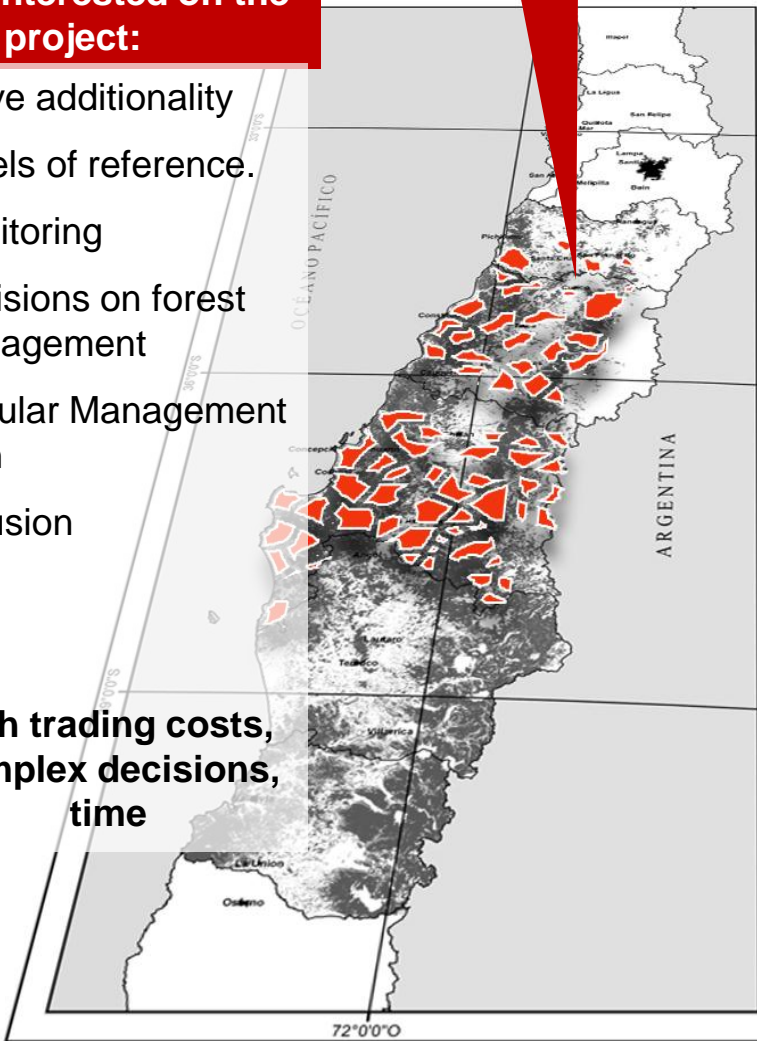
## Present situation for any person interested on the project:

- Prove additionality
- Levels of reference.
- Monitoring
- Decisions on forest management
- Regular Management Plan
- Diffusion

= High trading costs, complex decisions, time

100 hectares

ÁREAS ESPECIALES DE FORESTACIÓN, PLANTACIÓN FORESTAL Y BOSQUE NATIVO DESDE LA VI REGIÓN A LA XI REGIÓN.

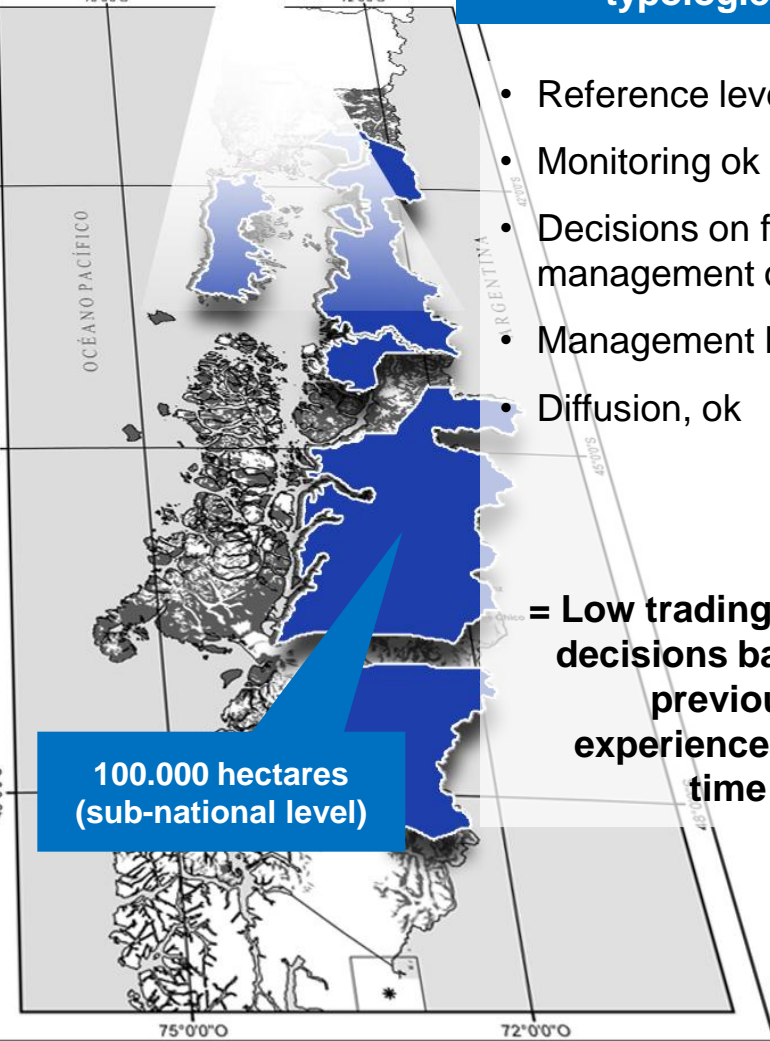


## Projected situation under typologies:

- Reference levels ok
- Monitoring ok
- Decisions on forest management ok
- Management Plan ok
- Diffusion, ok

= Low trading costs, decisions based on previous experiences, less time

100.000 hectares (sub-national level)



LEYENDA

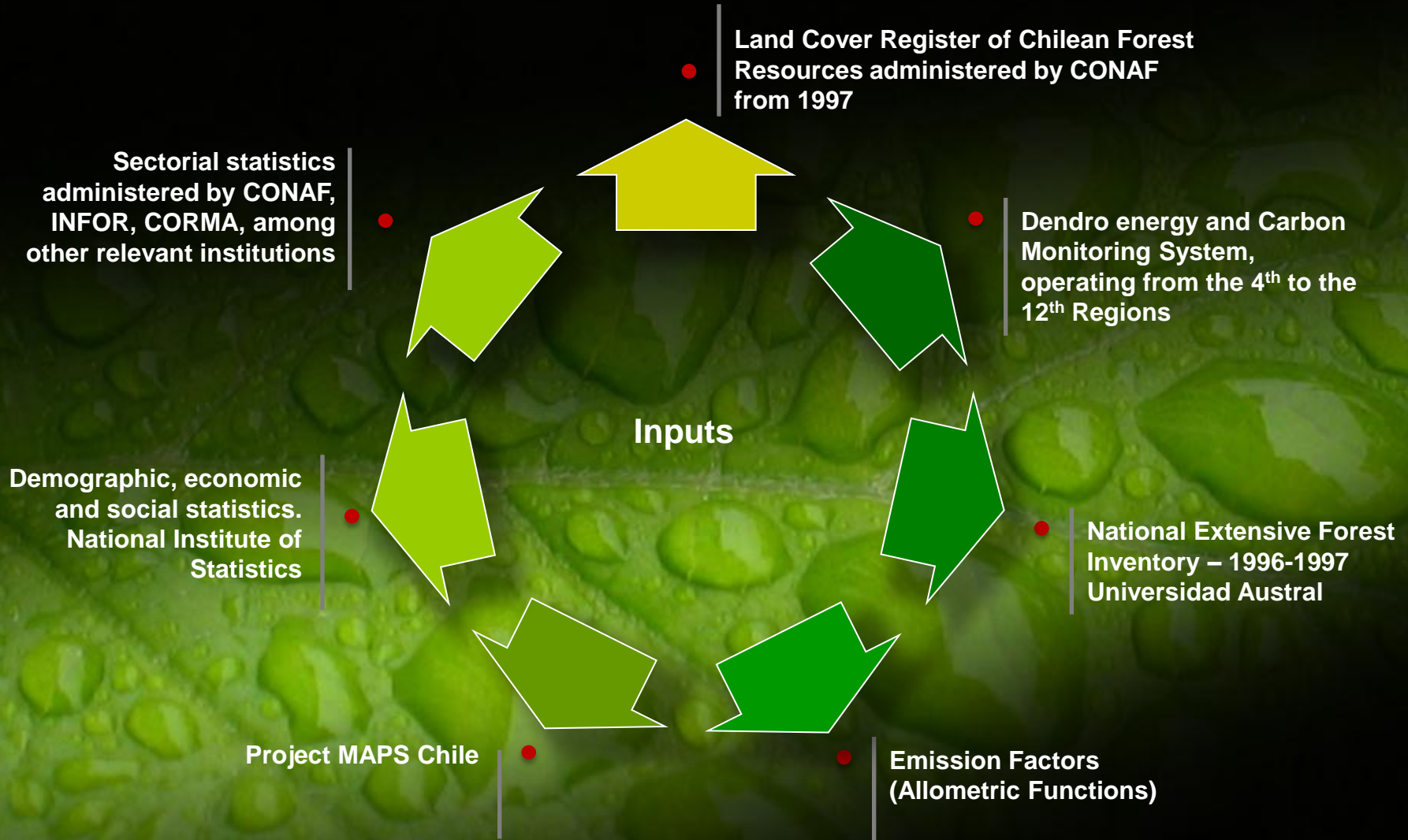


## 5. REDD + strategy

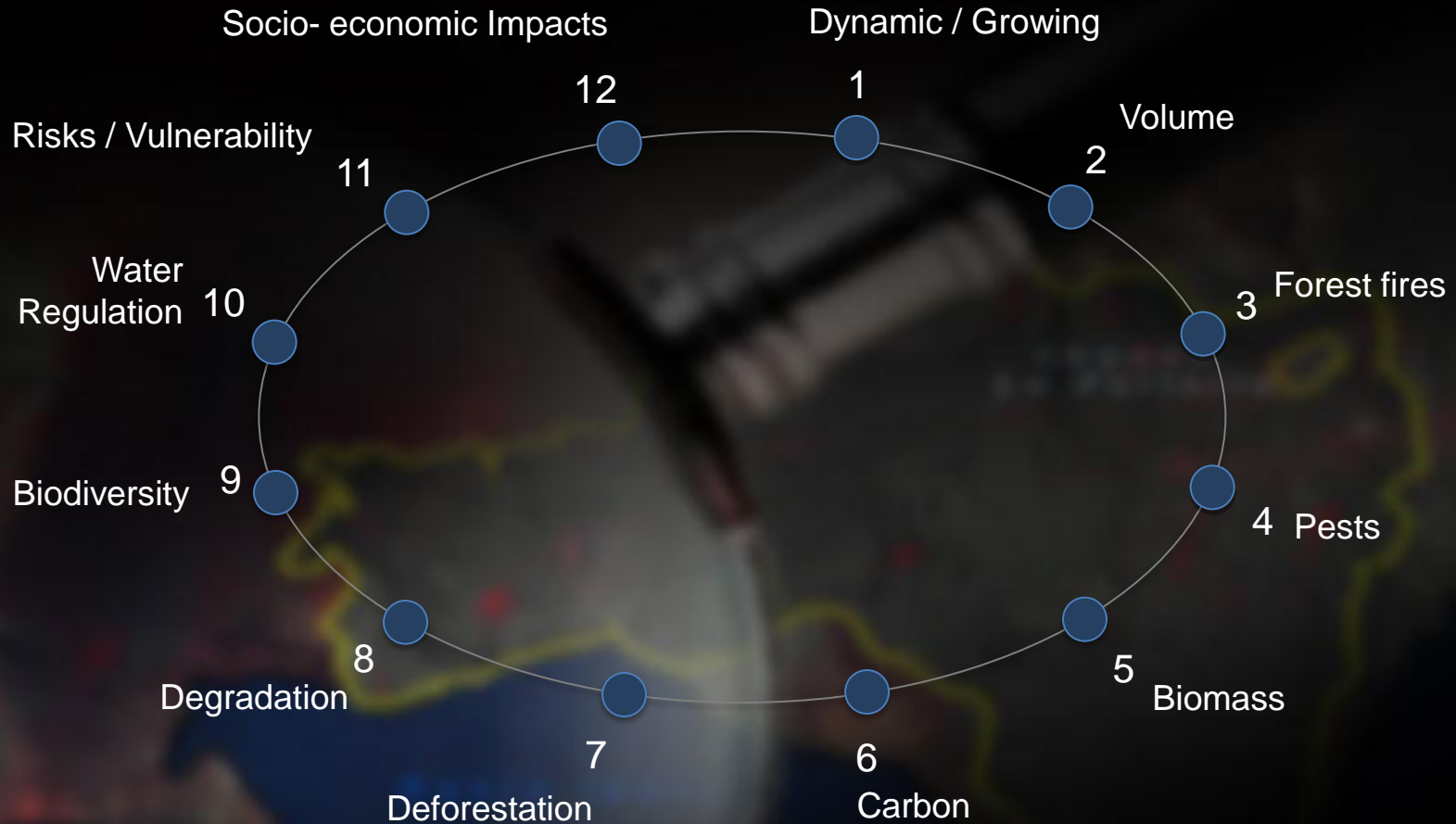


1. Analysis of the current national initiatives on forestry promotion (regulation on forestation and native forests recovery) under the context of REDD+.
  2. A larger number of professionals working directly with owners.
  3. Enhance the enforcement of forest rules and regulations, avoiding illegal logging.
  4. Land tenure regularization.
- ..... and more.

## 6. Reference levels



# 7. Monitoring system



Forest Monitoring

## 8. Budget

| Components           | Sub-components                          | Costs estimated in thousands of US\$ |              |              |              | Sub Total     | TOTAL BY COMPONENT |
|----------------------|---|--------------------------------------|--------------|--------------|--------------|---------------|--------------------|
|                      |   | 2012                                 | 2013         | 2014         | 2015         |               |                    |
| Component 1          | 1a. Institutional                       | 115                                  | 195          | 255          | 255          | 820           | 3.010              |
|                      | 1b. Dialogue                            | 235                                  | 295          | 295          | 295          | 1.120         |                    |
|                      | 1.c Diffusion                           | 215                                  | 285          | 285          | 285          | 1.070         |                    |
| Component 2          | 2a. Evaluation                          | 310                                  | 495          | 510          | 520          | 1.835         | 6.960              |
|                      | 2b. Strategy                            | 185                                  | 840          | 810          | 790          | 2.625         |                    |
|                      | 2c. Execution Framework                 | 180                                  | 455          | 430          | 345          | 1.410         |                    |
|                      | 2d. Environmental and social impacts    | 130                                  | 320          | 320          | 320          | 1.090         |                    |
| Component 3          | 3. Reference Levels                     | 40                                   | 375          | 665          | 335          | 1.415         | 1.415              |
| Component 4          | 4a. Monitoring System                   | -                                    | 680          | 670          | 600          | 1.950         | 2.030              |
|                      | 4b. Multiple Benefits                   | -                                    | 80           | -            | -            | 80            |                    |
| Component 6          | 6.- Monitoring and Evaluation Framework | -                                    | 195          | 35           | 35           | 265           | 265                |
| <b>TOTAL BY YEAR</b> |   | <b>1.410</b>                         | <b>4.215</b> | <b>4.275</b> | <b>3.780</b> | <b>13.680</b> | <b>13.680</b>      |

| Contributors                   | Costs estimated in thousands of US\$ |              |              |              | Total         |
|--------------------------------|--------------------------------------|--------------|--------------|--------------|---------------|
|                                | 2012                                 | 2013         | 2014         | 2015         |               |
| National Government            | 434                                  | 1.824        | 1.475        | 1.186        | 4.919         |
| FCPF                           | 394                                  | 836          | 1.145        | 1.226        | 3.600         |
| Private Industry               | 253                                  | 699          | 832          | 607          | 2.391         |
| Others to be determined (NAMA) | 329                                  | 857          | 824          | 762          | 2.770         |
| <b>TOTAL</b>                   | <b>1.409</b>                         | <b>4.215</b> | <b>4.276</b> | <b>3.781</b> | <b>13.680</b> |



Thank you



**CONAF**  
Ministerio de  
Agricultura

Gobierno de Chile

Thank you



**CONAF**  
Ministerio de  
Agricultura

Gobierno de Chile